



NEW YEAR'S EVE 2011 IN FINNISH LAPLAND



29th of December 2011

Arrival at Rovaniemi airport

Private taxi transfer to your apartment at Ounasvaaran Pirtit

Four nights in a family apartment, half-board (breakfast and dinner)

30th of December 2011

Morning excursion: Reindeer Safari (2 hours 30 minutes)

We go by car to the Reindeer Park at the Polar Circle, where our guide will tell us all about reindeer husbandry and how to harness a reindeer. Then off we go on an enjoyable ride in the snowy forest. We stop at a camp fire for some hot coffee and get the chance to drive a sledge one at a time. Back at the Reindeer Park we unharness and feed the reindeer.

31st of December 2011

Morning excursion: Husky Safari (3 hours)

We go by car to the Husky Farm. We are greeted by the friendly Huskies, eager to go for a ride in the frosty forest and over the snowy meadows. We will learn how to control our own team of dogs and enjoy the quiet ride once we are on our way. The driving time with the Huskies is approximately 1 hour and 45 minutes. Our safari ends at the farm with a well-deserved hot drink.

Special New Year's Eve Gala Dinner

1st of January 2012

Free time for sport activities

Evening excursion: Snow Mobile Safari looking for the Northern Lights (3 hours)

After dinner, we leave the city lights behind and drive into the wilderness on our snow mobiles. We stop and have a light snack by the warm open fire. If we are lucky, we may see the Northern Lights dancing in the sky. Later in the evening we return to the city on our snow mobiles.

2nd of January 2012

Private taxi transfer to Rovaniemi airport



Total price per adult: 1190 euros
Child supplement (4-12 years) : 890 euros
This price does not include flight tickets

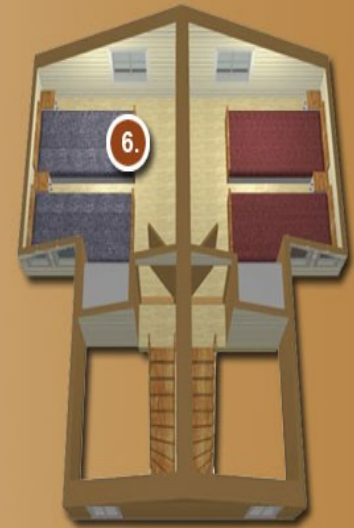
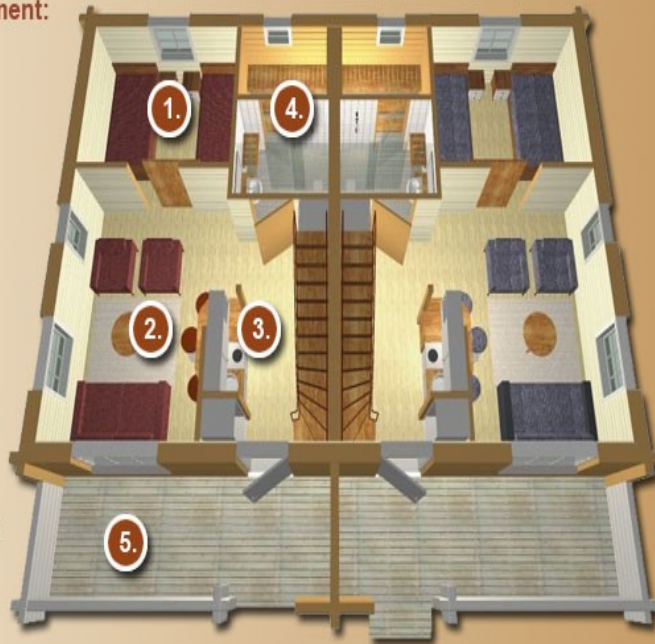




SEMI-DETACHED HOUSE = TWO CABINS

Downstairs 34.5 m² / apartment:

1. the bedroom has two beds that are each 105 cm wide
 - some bedrooms have two wallbeds
 - some apartments have a sofa bed in the living area
2. living room
3. kitchenette has
 - crockery
 - microwave oven
 - hob
 - fridge
 - coffee maker and kettle
4. toilet, shower and sauna
5. terrace



Upstairs 10 m² / apartment:

6. the bedroom has two beds that are each 105 cm wide

Facilities:

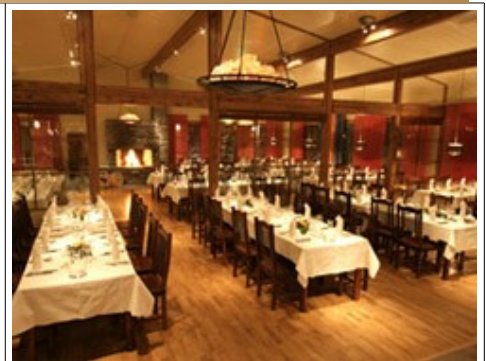
- television, telephone, internet connection
- linens, towels



Exterior view



Interior view



Restaurant

Ounasvaaran Pirtit is a complete holiday resort with restaurant services and activities located at the Ounasvaara Ski Centre in the Kemijoki riverside landscape at 3 kilometres from the centre of Rovaniemi

Cap Scandinavia Travel AB
+46 18 42 26 00
info@capscandinavia.com

Back to website
www.capscandinavia.com

